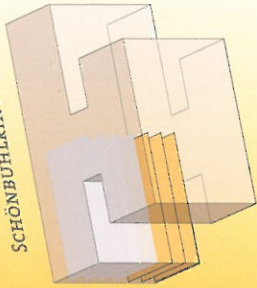
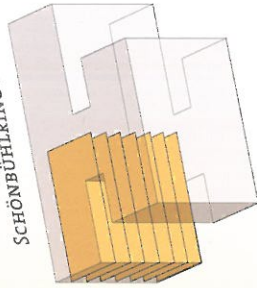


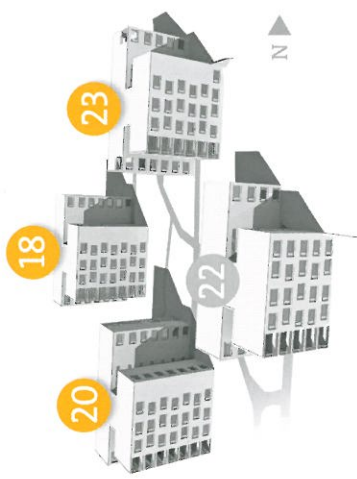
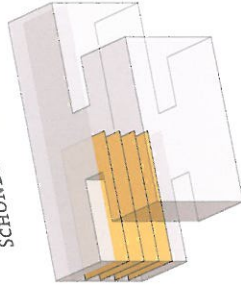
SCHÖNBÜHLRING 20



SCHÖNBÜHLRING 18



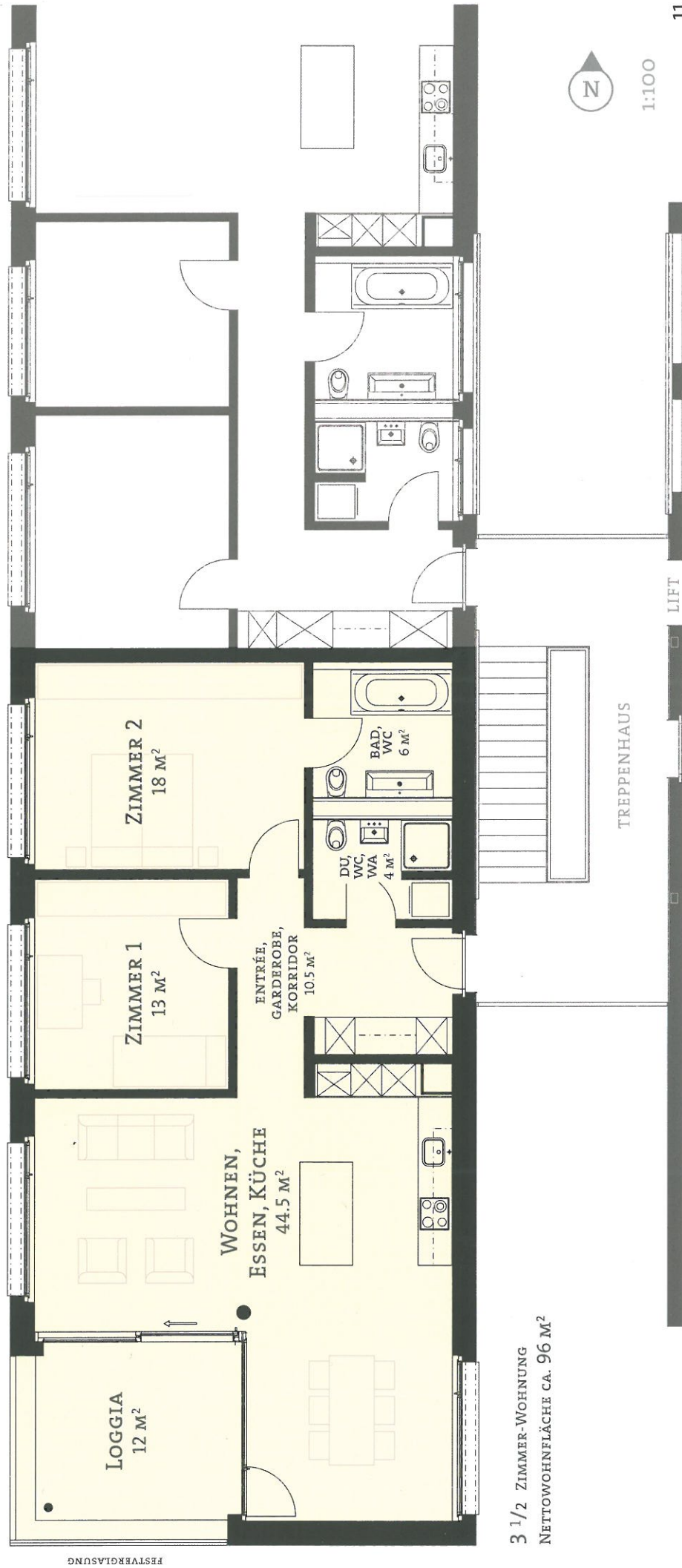
SCHÖNBÜHLRING 23



- 2. OBERGESCHOSS | WHG-NR. 3-31
- 1. OBERGESCHOSS | WHG-NR. 3-21
- ERDGESCHOSS | WHG-NR. 3-11

- ATTIKAGESCHOSS | WHG-NR. 4-71
- 5. OBERGESCHOSS | WHG-NR. 4-61
- 4. OBERGESCHOSS | WHG-NR. 4-51
- 3. OBERGESCHOSS | WHG-NR. 4-41
- 2. OBERGESCHOSS | WHG-NR. 4-31
- 1. OBERGESCHOSS | WHG-NR. 4-21
- ERDGESCHOSS | WHG-NR. 4-11

- 3. OBERGESCHOSS | WHG-NR. 1-41
- 2. OBERGESCHOSS | WHG-NR. 1-31
- 1. OBERGESCHOSS | WHG-NR. 1-21
- ERDGESCHOSS | WHG-NR. 1-11



3 1/2 ZIMMER-WOHNUMG
NETTOWOHNFÄCHE CA. 96 M²



1:100

LIFT

TREPPENHAUS